



Concert Choir Virtual Learning

High School Piano

April 17, 2020



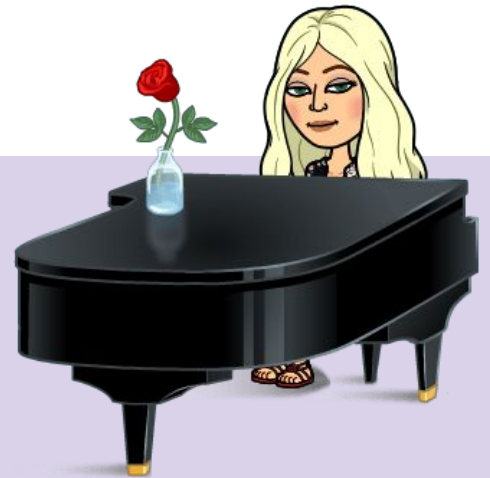
High School Concert Choir

Lesson: April 17, 2020

Objective/Learning Target: students will able to identify the notes on a piano, identify whole and half steps, and play a chromatic scale

FRIDAY, APRIL 17

Concert Choir



BELL WORK

- Complete the [google form](#)



LESSON... WHY SHOULD I LEARN PIANO?

- Helps you learn your part in your music
- Helps you to lead a sectional
- Helps you with your key signatures and music theory
- Learn new songs



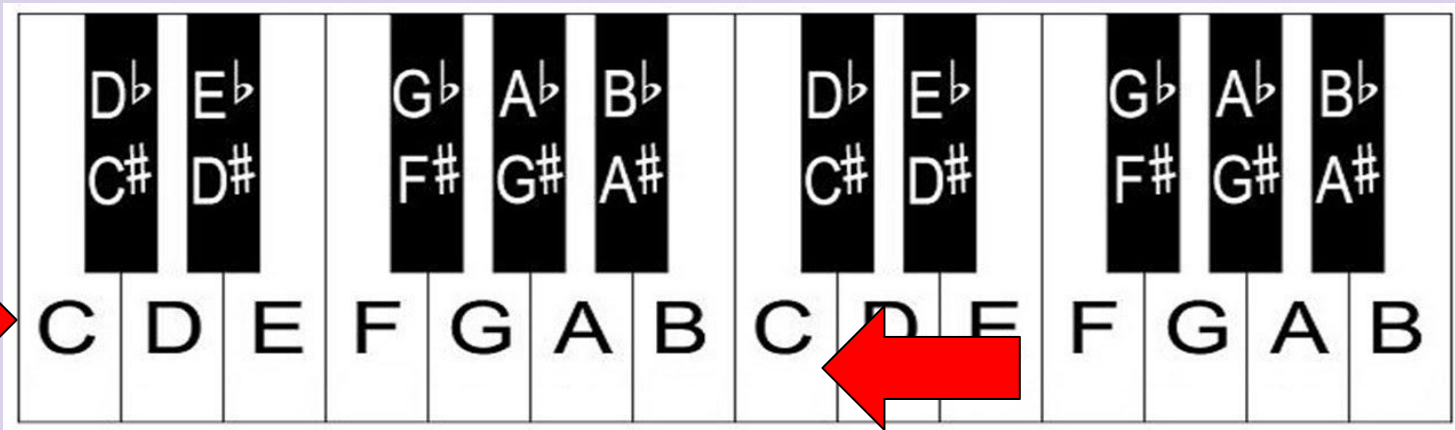
LESSON... EXPLORE

1. Go to virtualpiano.net
2. Notice the groupings of the black keys
 - a. Groups of 2 and 3
3. Play a grouping of 2 and then 3
 - a. Notice the difference in pitch
4. Play some of the white keys



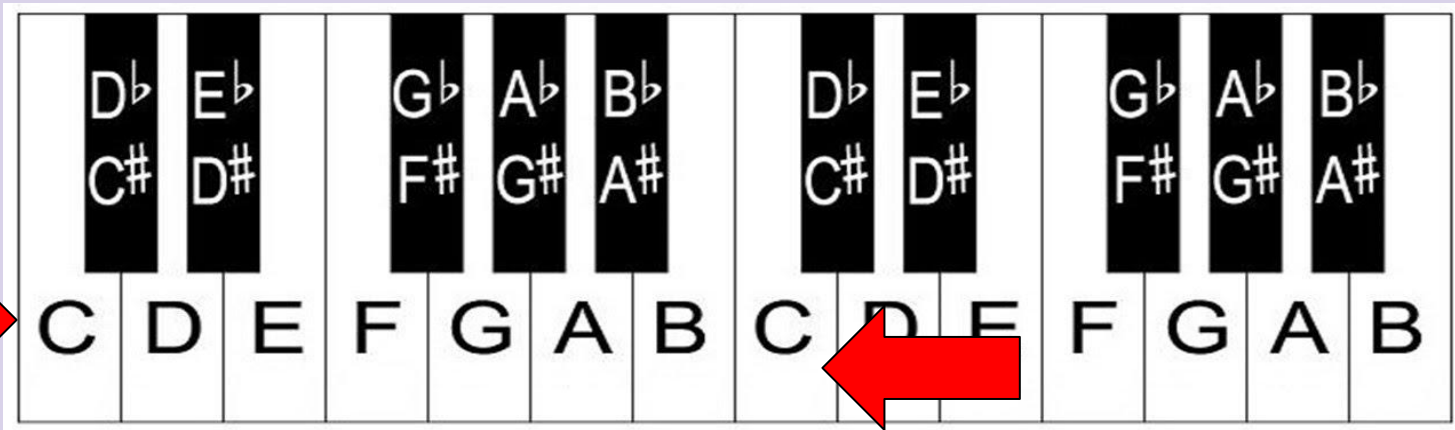
LESSON: THE BASICS

1. The piano follows our musical alphabet on the white keys...
ABCDEFGABCDEFGABC...
2. Note Names:
 - a. Find a grouping of 2 black keys
 - b. The note name C is always to the left of the grouping of 2 black keys.
 - c. Then it goes in the order of our musical alphabet.
 - d. Once you know one note name, you can figure them all out!



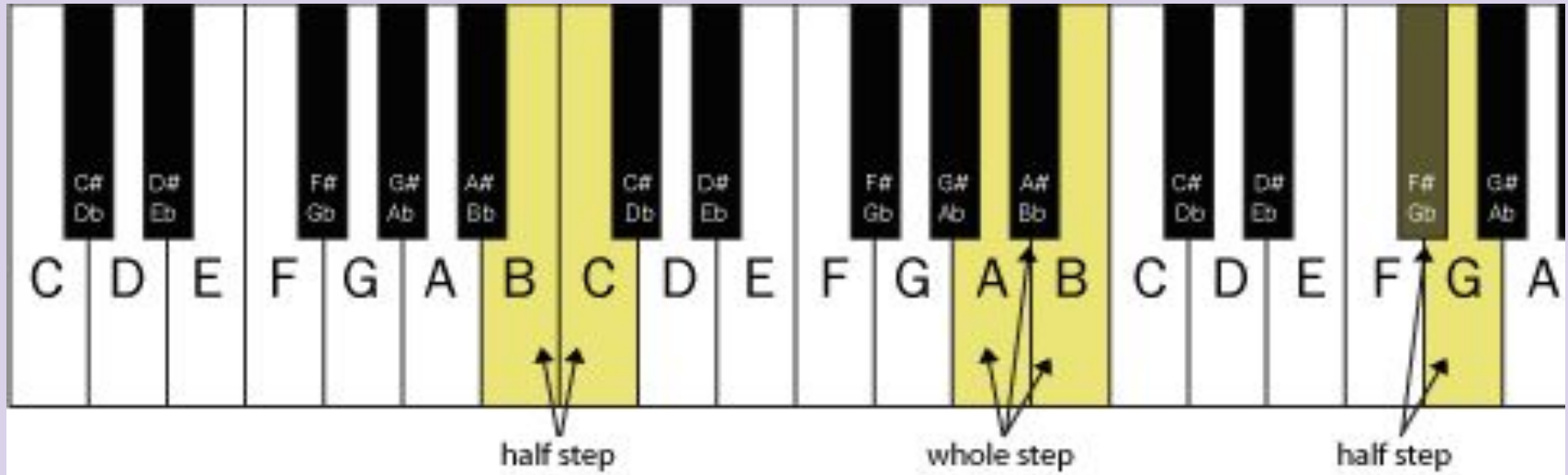
LESSON: THE BASICS

1. The black keys are the sharps and flats
 - a. Sharps= up $\frac{1}{2}$ step Flats= down $\frac{1}{2}$ step
2. One octave is from one C to the next C (any letter like A to A)
 - a. Scales start on one letter and go up an octave (to the next highest letter)



LESSON: THE BASICS

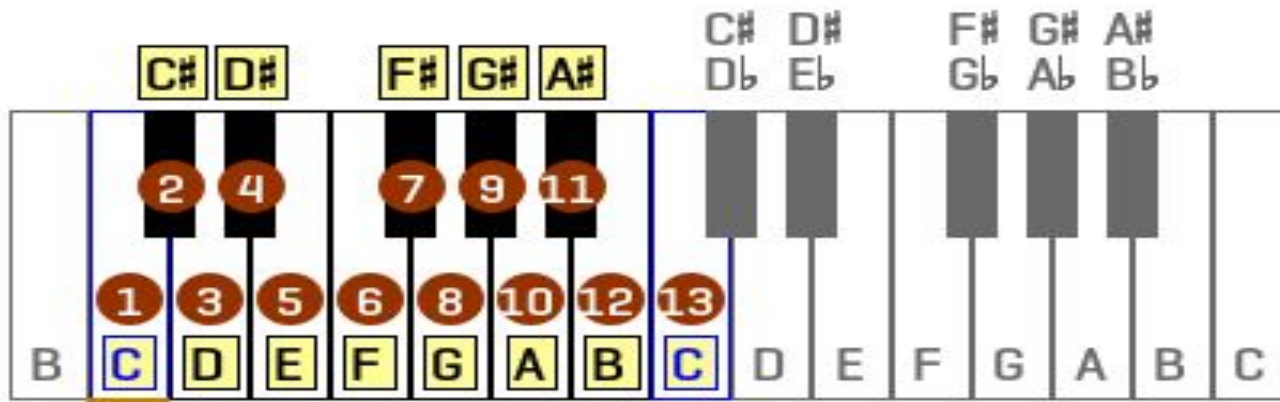
- The piano is made up of whole and half steps
- On your virtual piano, find whole and half steps
 - Play them and hear the difference
 - Half step= the distance from one key to the closest key (up or down)
 - Whole step= skips one key in between



LESSON: CHROMATIC SCALE

- Start on C and play every key (black and white) until the next C.
 - This is a chromatic scale
 - Chromatic scale = $\frac{1}{2}$ steps
- Try a chromatic scale starting on E.
- Now try it starting on A and ending on the next A

C chromatic scale



LESSON

This is what a chromatic scale looks like on staff paper.

Play a chromatic scale starting on C and follow along



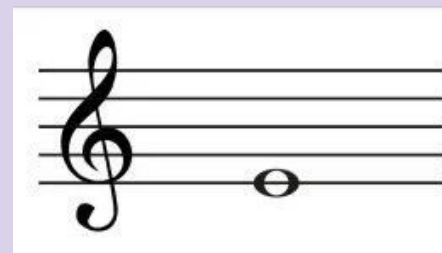
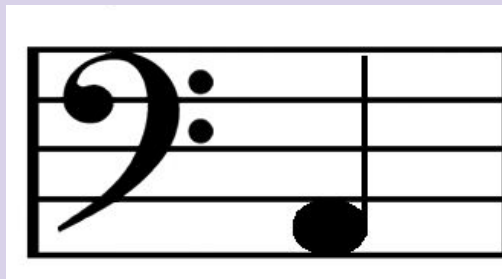
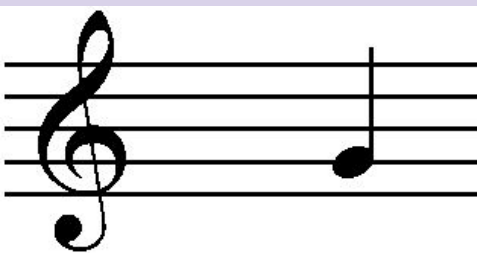
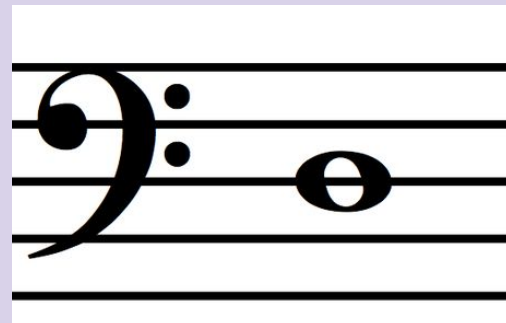
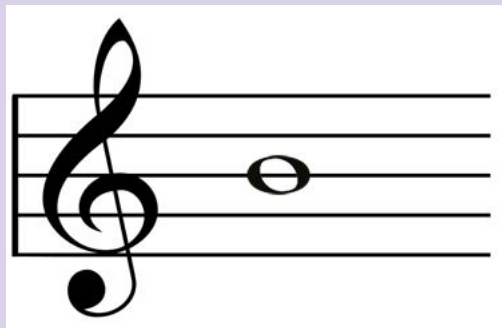
The image displays two musical staves in treble clef. The first staff shows an ascending chromatic scale starting on middle C (C4) and ending on the next C (C5). The notes are: C, C# (C sharp), D, D# (D sharp), E, F, F# (F sharp), G, G# (G sharp), A, A# (A sharp), B, and C. The second staff shows a descending chromatic scale starting on the C above middle C (C5) and ending on middle C (C4). The notes are: C, B, Bb (B flat), A, Ab (A flat), G, Gb (G flat), F, E, Eb (E flat), D, Db (D flat), and C. The notes are written as quarter notes on a five-line staff.

note names: C C# D D# E F F# G G# A A# B C

C B B \flat A A \flat G G \flat F E E \flat D D \flat C

EXTRA PRACTICE:

Identify the following notes (watch your clefs) and play the note on the piano



A REVIEW:



ONLINE RESOURCES

- [Virtualpiano.net](https://www.virtualpiano.net)
- Apps for phones
 - Pitch Perfect
 - The Piano
- If you need a review on how to find the key signature, [watch this](#).
- Sightreadingfactory.com
 - For additional practice!
- Musictheory.net
 - To practice key signatures and note naming

